



PRODUCT MANUAL



CATALOGUE

| | |
|-------------------------------------|----|
| WARNING | 1 |
| SPECIFICATION | 2 |
| OVERVIEW | 3 |
| DIRECTION | 4 |
| TIME SETTING | 6 |
| APP INSTRUCTIONS | 8 |
| | 9 |
| CONCENTRATION AND CONSUMPTION | 10 |
| TROUBLESHOOTING | 11 |



WARNING



Shall not modify, disassemble or repair the machine arbitrarily. Any failure happens, please contact relevant technician in time.



Shall not damage the power cord, force to bend, yank, heavy load, clip or reprocess.



--Shall not use the AC plug when it is damaged or un-matched with the socket;

--Shall not wet the machine or the AC plug;

--Shall not use overladen power socket, wire or broken plug.



Shall not touch the wire or product shell when thundering or/and lightning.



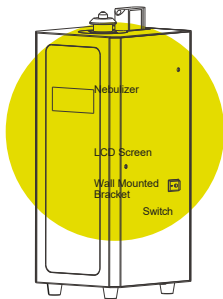
Shall not disassemble the machine when it is under operating.

NOTE

1. After installation, please keep the machine vertical. Tilting or placing it flat may cause an oil overflow and machine damaged.
2. Shall not modify, disassemble or repair the machine arbitrarily. Any failure happens, please contact relevant technician in time.
3. Atomization icon displays on screen but the machine would not diffuser when it stays on pause time.
4. It is invalid to touch/tap button when machine is under lock status.
5. If the screen display messy, programs crash, please rest the machine by touch "ENT" button about 5 seconds till a short "beep" sound comes out.



SPECIFICATION



| | |
|---------------------|--|
| [Model] | : AC HOME |
| [Dimention] | : 135*133*357mm |
| [Bottle capacity] | : 250ml |
| [Net weight] | : 4kg |
| [Coverage] | : ^{Clock} 200m ² / 600m ³ |
| [Power] | : 7W |
| [Voltage] | : DC12V |

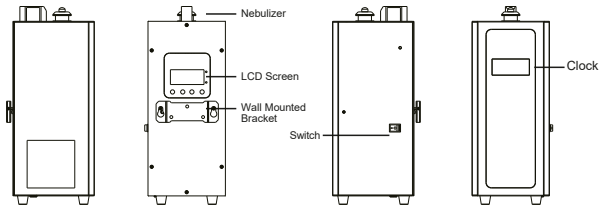


Plug Bottle Manual Gasket PTFE tape Bottle cap Mounting
bracket

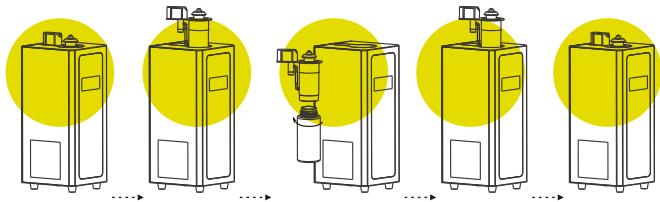
PTFE tape:

1. Tie up/twine the diffuser core 3-5 circles when change a new one to the machine.
2. Tie up/twine the connector screwing to the machine.

OVERVIEW



INSTRUCTION

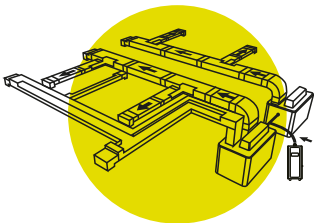


1. Open the package.
2. Pull out the bottle.
3. Unscrew the bottle and fill essential oil.

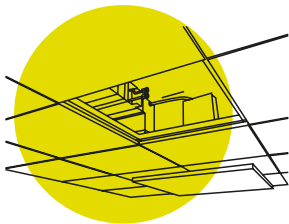
4. Insert the bottle.
5. Scent machine.

DIRECTION

Connect to the centre air condition.



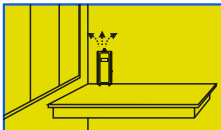
Duct connected



Stand on floor



Tabletop placement

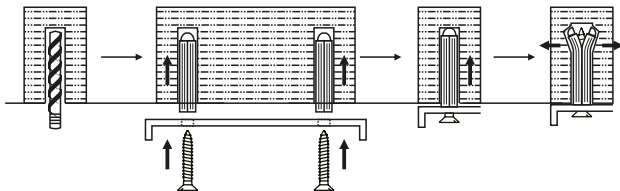


Wall mounted



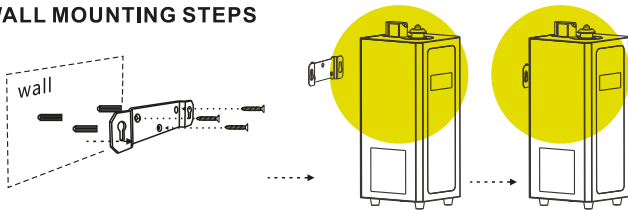
DIRECTION

How to use the expansion bolt:



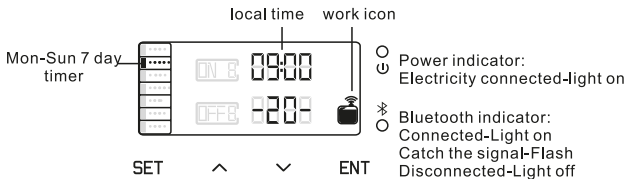
Drill the hole in the wall, insert the expansion pipe to the hole, put the screw into the expansion pipe and tighten.

WALL MOUNTING STEPS



1. Choose a position.
2. Fasten the mounting bracket with nails.
3. Hang the machine.
4. Done.

TIME SETTING



Turn on the power

Connect the power and turn on the switch with a sound “Beep” comes out, then the screen shows the initial time and the current grade.

Turn off the power

The screen will be off when turn off the switch and disconnect the power.

Local time setting

Press SET button and hold for 5 seconds until you hear a sound “beep” then the date value start flash. Press “up” or “down” to adjust the date, then confirm and adjust time value by press “ENT”, press “up” or “down” to adjust the time. Press “SET” for saving the setting. (Shown as picture 1)



SET ^ v ENT
(1)



SET ^ v ENT
(2)

Concentration grade setting

There are 20 grades to choose. Press “up” button, the grade will increase. Press “down”, the grade will decrease. (Shown as picture 2)

Work time period setting

Press SET button to set work time period, there are 5 working periods in total(Shown as picture 3). Press up or down to set start time, press ENT button to confirm and go to stop time setting. After finished the first working time periods setting(ON1&OFF1), we can set the working date. Press ENT to go to MON area and press up to open the current working time periods (The screen shows ON1)(Shown as picture 4), press down to close the current working time periods (The screen shows OFF1)(Shown as picture 5). Press ENT to move to next day, the step is the same with the setting of MON. Press SET to go to next working time periods setting, 2, 3, 4, 5 working time periods setting set is same with the first. Finally press SET to confirm and exit the setting.



SET ^ v ENT
(3)



SET ^ v ENT
(4)

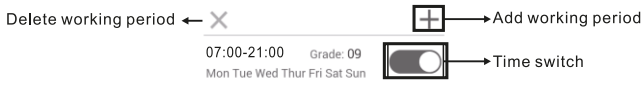
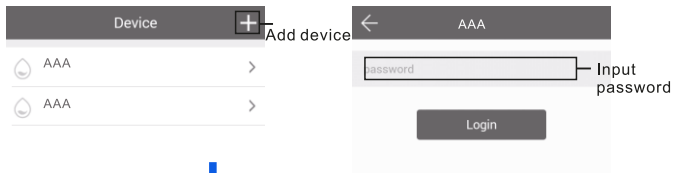


SET ^ v ENT
(5)

| Working Time Periods | 00:00 - 00:00 | 00:00 - 00:00 | 00:00 - 00:00 | 00:00 - 00:00 | 00:00 - 00:00 |
|----------------------|---------------------|---------------------|---------------------|---------------------|---------------------|
| Mon | ON/OFF | ON/OFF | ON/OFF | ON/OFF | ON/OFF |
| Thues | ON/OFF | ON/OFF | ON/OFF | ON/OFF | ON/OFF |
| Wed | ON/OFF | ON/OFF | ON/OFF | ON/OFF | ON/OFF |
| Thur | ON/OFF | ON/OFF | ON/OFF | ON/OFF | ON/OFF |
| Fri | ON/OFF | ON/OFF | ON/OFF | ON/OFF | ON/OFF |
| Sat | ON/OFF | ON/OFF | ON/OFF | ON/OFF | ON/OFF |
| Sun | ON/OFF | ON/OFF | ON/OFF | ON/OFF | ON/OFF |

(PS: The default working period is 07:00-21:00 in the first working. Period, others are all 00:00)

APP instructions



(PS: There are 5 working periods available to be set.)

Amend password


← Device control

Set

PCB Version: AAAA

Equipment version: AAAA

APP version: AAAA



← Change password

If you forget the password, please press the reset button to restore the factory settings. The factory settings password is 8888.

← Working period setting

Start working time Stop working time


04

05

: :

07 01 01 02

08 02 02 03



Slide up and down to adjust

Repeat

Select the day

Concentration grade

Select grade (1-20grade)

Concentration and Consumption

| Grade | work(s) | intervals(s) | Consumption(ml/h) |
|-------|---------|--------------|-------------------|
| G1 | 15s | 300s | 0.1 |
| G2 | 15s | 150s | 0.2 |
| G3 | 20s | 120s | 0.3 |
| G4 | 20s | 85s | 0.4 |
| G5 | 25s | 80s | 0.5 |
| G6 | 30s | 75s | 0.6 |
| G7 | 30s | 60s | 0.7 |
| G8 | 30s | 50s | 0.8 |
| G9 | 30s | 40s | 0.9 |
| G10 | 30s | 33s | 1.0 |
| G11 | 33s | 30s | 1.1 |
| G12 | 40s | 30s | 1.2 |
| G13 | 50s | 30s | 1.3 |
| G14 | 60s | 30s | 1.4 |
| G15 | 75s | 30s | 1.5 |
| G16 | 80s | 25s | 1.6 |
| G17 | 85s | 20s | 1.7 |
| G18 | 120s | 20s | 1.8 |
| G19 | 150s | 15s | 1.9 |
| G20 | 300s | 15s | 2.0 |

▲ Increase the concentration ▼ Decrease the concentration

PS: 1. Above data is based on testing oil in laboratory.

2. Above data is for reference only. The consumption of different oil may be different.

TROUBLESHOOTING

Before asking to have the machine repaired, please try to diagnose the problem first following to bellow instructions.

| Symptom | Remedy |
|------------------|--|
| Does not diffuse | <ul style="list-style-type: none">- Check the power is ON or OFF;- If the machine is in "not working period", it stops diffuse;- The pump is damaged, change a new pump. |
| Spray little | <ul style="list-style-type: none">- Atomized nozzle may be blocked, diffuse with alcohol to do cleaning;- Pump is aging, change a new one. |
| Spray liquid | <ul style="list-style-type: none">- Atomized nozzle is damaged, change a new one;- Machine is tilted or lay flat, please make it stand onend. |
| Oil spill | <ul style="list-style-type: none">- Bottle is loose, screw it to the right place;- Sealing gasket is loose/damage, change a new one. |
| Abnormal sound | <ul style="list-style-type: none">- Pump is llose, install it correctly;- Pump is damaged, change a new one. |

EQUIPMENT CLEANING

The machine needs to be cleaned when below situations happen:

1. You're about to change to another kind of essential oil.
2. The atomization volume becomes weak.

Cleaning steps:

1. Find a clean bottle and fill it with industrial alcohol.
2. Install bottle with industrial alcohol to the machine and turn on the electric.
Let it work for 5-10 minutes.
3. Turn off the electric, finish the cleaning.

Warnings

The appliance is not to be used by persons (including children) with reduced physical ,sensory, or mental capabilities or lack of experience and knowledge, unless they have been given supervision or instruction

Children being supervised not to play with the appliance