



PRODUCT MANUAL



We advocate green environmental protection, refuse over-packing.



CATALOGUE

CAUTION	1
SPECIFICATION	2
OVERVIEW	3
DIRECTION	4
TIME SETTING	7
INSTRUCTIONS	9
DIFFUSION TIME PERIODS	11
CONCENTRATION AND CONSUMPTION	12
EQUIPMENT CLEANING	13
WARNING	14
TROUBLESHOOTING	15



CAUTION

Please comply with the following matters for safety use:



Shall not modify, disassemble or repair the machine arbitrarily. Any failure happens, please contact relevant technician in time.



Shall not damage the power cord, force to bend, yank, heavy load, clip or reprocess.



- Shall not use the AC plug when it is damaged or un-matched with the socket;
 - Shall not wet the machine or the AC plug;
 - Shall not use overladen power socket, wire or broken plug.
-



Shall not touch the wire or product shell when thundering or/and lightning.



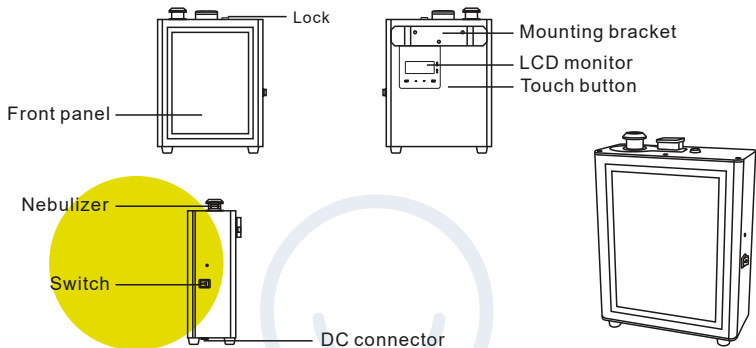
Shall not disassemble the machine when it is under operating.

The above conditions may lead to fire, electric shock, short out or other failures.

SPECIFICATION

【 Model	AC100 / AC250 / AC600
【 Dimension	240*205*100mm / 266*220*100mm / 315*225*110mm
【 Machine N.W.	】 4.1kg / 4.4kg / 5.1kg
【 Voltage	Input: AC100V~240V 50/60Hz Output: DC12V
【 Power	10W / 10W / 15W
【 Technology	】 Twin-fluid atomization technology
【 Coverage	AC100: 100m ² , 300m ³ AC250: 400m ² , 1200m ³ AC600: 800m ² , 2400m ³
【 Bottle capacity	】 250ml / 480ml / 1000ml
【 Material	Machine: Iron, Acrylic Bottle: PET Nebulizer: POM
【 Accessories	】 Plug, Bottle, PU tube, Mounting bracket, PTFE tape, Connector, Key, Manual.

OVERVIEW



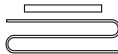
Machine



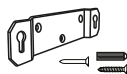
Bottle



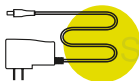
Gasket



PU tube



Mounting bracket



Plug



PTFE tape



Connector



Manual



Key

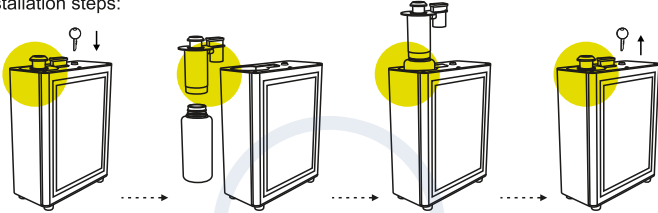
- PTFE tape: 1. Tie up / twine the atomized core when change a new one to machine.
2. Twine connector screwing to machine.

Please confirm the completeness of your parcel. If there are any problems, please contact us within one month of receiving it.

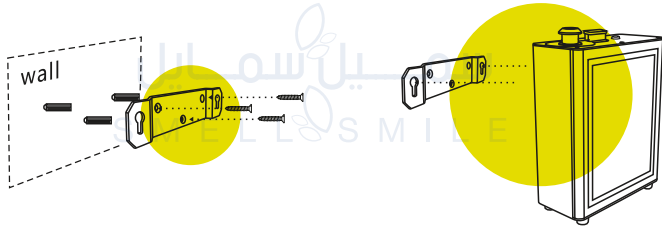
DIRECTION

Ideal for Hotels, Conference Rooms, Malls, Exhibition Halls, Major retailers, Bars, SPAs, Business places or anywhere you want a fragrance experience.

Bottle installation steps:



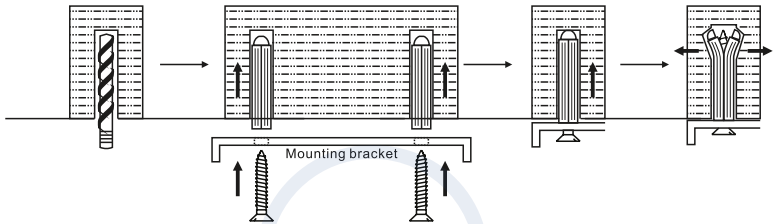
1. Unlock the diffuser with the key and pull out the bottle.
2. Unscrew the bottle and fill essential oil.
3. Insert the bottle.
4. Lock the diffuser.



1. Choose a position.
2. Fasten the mounting bracket with nails.
3. Hang the machine.
4. Done.

DIRECTION

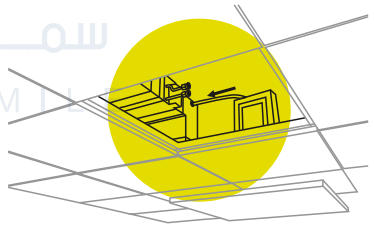
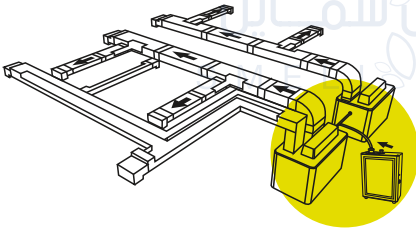
How to use the expansion bolt:



Drill the hole in the wall, insert the expansion pipe to the hole, put the screw into the expansion pipe and tighten.

1. Connect with centre air condition.

2. Duct connected.

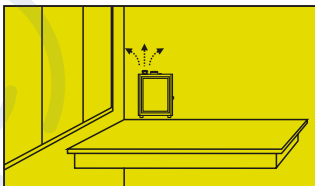
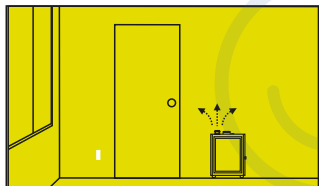


DIRECTION

Stand on floor

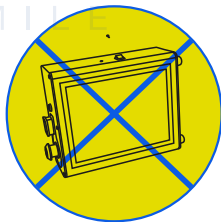
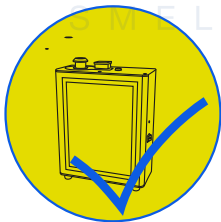
Wall-mounted

Tabletop placement

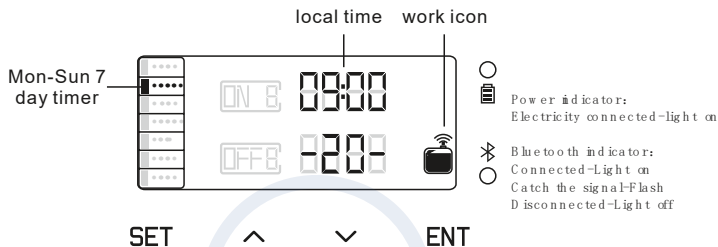


Warning:

After installation, please keep the machine vertical. Tilting or placing it flat may cause an oil overflow. The machine efficiency may be affected if the circuit board is contaminated.



TIME SETTING



Power ON

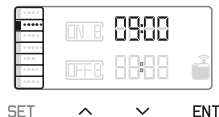
Connect the 12V adaptor to the outlet and turn ON the power switch. Local time and scent intensity grade will come on.

Screen Lock and Unlock

The LCD screen will automatically lock itself after 60 seconds if not used. Press SET and hold for 5 seconds to unlock the display.

Local time setting

Press **SET** button for 3 seconds until you hear a beep to enter local time setting menu. Press **v** or **^** button to choose the correct day. Then press **ENT** button to move to local time setting. Press **v** or **^** button to change the number. Press **ENT** button to move to another position. Press **SET** to confirm (Figure 1).



(1)

TIME SETTING

Diffusion time setting

There are 5 working periods available to set the hours of operation (Figure 2). Touch **SET** button to set working period (ON1). Press **ENT** button move to the operation time, press **▲** or **▼** button to adjust the number. Press **ENT** button again the scent intensity/level will appear (Figure 3), press **▲** or **▼** button to adjust the intensity/level. Once the **ON** and **OFF** time and the intensity is set choose the day of the week. Press **ENT**, choose your day (Mon) then press **▲** button to set the working time (under ON1) (Figure 4) or press **▼** button to turn off the working time (under OFF1) (Figure 5). Press **ENT** to move to the next day and repeat the steps to set TUES...SUN. Once settings are set press **SET** to confirm and exit or press **ENT** button again the ON1 and its operation time will appear, press the **▲** button will appear ON2, ON3..ON5, setting way is same as ON1.

Intensity Setting

The scent machine has a total of 20 grades. Press **▲** button to increase the intensity and **▼** button to decrease. (Figure 6)



SET ^ v ENT
(2)



SET ^ v ENT
(3)



SET ^ v ENT
(4)



SET ^ v ENT
(5)

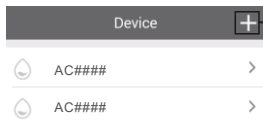


SET ^ v ENT
(6)

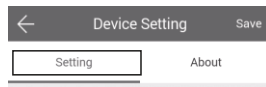
INSTRUCTIONS

Where to get the app:

Please search " Smell and Smile " in Google play or App store and you will find it.



Add device
IOS shows



Essential oil :
100ml
Remaining :
50ml

Name: Maximum 16 chara...

AC####

Amend
device name

Label:

Remarks:
location

Android system:
Delete working period

IOS :

slide left to delete "←"

07:00-21:00

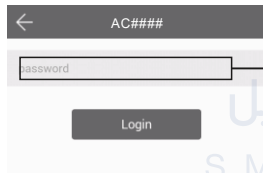
Grade: 09

Mon Tue Wed Thur Fri Sat Sun



Add working
period

Time switch



Input password

(PS:There are 5 working periods
available to be set.)

After adjusting grade,
please save it BEFORE
going back to the home
page.

INSTRUCTIONS

← Working period setting Save

Start working time Stop working time

04

05 00

06 : 00 00 : 01 → Slide up and down to adjust

07 01 01 02

08 02 02 03

Repeat Mon Tue Wed Thur Fri Sat Sun → Select the day

Concentration grade → Select grade (1-4 grade)

CustomStall

Work Time(S)	Stop Time(S)
14	24
15	25
16	26

Please slide here to adjust working and pause seconds

Device control

Set About

PCB Version: GZZ1-030_V2.00

Equipment version: GZZ1-030_V2.00

APP version: A_V2.0.0

Change password



← Change password

The new password

Confirm password

Change password

If you forget the password, please press the reset button to restore the factory settings. The factory settings password is 8888.

DIFFUSION TIME PERIODS

Available working period	07:00 21:00	00:00 00:00	00:00 00:00	00:00 00:00	00:00 00:00
Mon	ON/OFF	ON/OFF	ON/OFF	ON/OFF	ON/OFF
Tues	ON/OFF	ON/OFF	ON/OFF	ON/OFF	ON/OFF
Wed	ON/OFF	ON/OFF	ON/OFF	ON/OFF	ON/OFF
Thur	ON/OFF	ON/OFF	ON/OFF	ON/OFF	ON/OFF
Fri	ON/OFF	ON/OFF	ON/OFF	ON/OFF	ON/OFF
Sat	ON/OFF	ON/OFF	ON/OFF	ON/OFF	ON/OFF
Sun	ON/OFF	ON/OFF	ON/OFF	ON/OFF	ON/OFF

(The first working period is set to factory default setting, 7 am ON and 21:00 OFF. The rest are at set to 00:00)

سَمِيل سَمِيل
SMELL & SMILE

CONCENTRATION AND CONSUMPTION

Grade	Consume(ml/h)			Concentration	
	AC100 (250ml bottle)	AC250 (480ml bottle)	AC600 (1000ml bottle)	Working(s)	Stop(s)
G1	0.05	0.05	0.20	15	300
G2	0.10	0.15	0.40	15	150
G3	0.15	0.20	0.60	20	120
G4	0.20	0.30	0.80	20	85
G5	0.25	0.35	1.00	25	80
G6	0.30	0.45	1.20	30	75
G7	0.35	0.50	1.40	30	60
G8	0.40	0.60	1.60	30	50
G9	0.45	0.65	1.80	30	40
G10	0.50	0.75	2.00	30	33
G11	0.60	0.85	2.25	33	30
G12	0.70	1.00	2.50	40	30
G13	0.80	1.10	2.75	50	30
G14	0.90	1.20	3.00	60	30
G15	1.00	1.30	3.25	75	30
G16	1.10	1.40	3.50	80	25
G17	1.20	1.55	3.75	85	20
G18	1.30	1.65	4.00	120	20
G19	1.40	1.80	4.25	150	15
G20	1.50	1.90	4.45	300	15

Note: Consumption rate based on factory trials only.

EQUIPMENT CLEANING

The machine needs to be cleaned when below situations happen:

1. You're about to change to another kind of essential oil.
2. The atomization volume becomes weak .

Cleaning steps:

1. Find a clean bottle and fill it with industrial alcohol.
2. Install bottle with industrial alcohol to the machine and turn on the electric. Let it work for 5-10 minutes.
3. Turn off the electric, finish the cleaning.

Tips:

You can use the machine directly after cleaning. There is no need to wash the tube again or wait until dry.



WARNING

- Atomization icon displays on screen but the machine would not diffuse when it stays on pause time.
- It is invalid to touch/tap button when machine is under lock status.
- If the screen displays messy, programs crash, please reset the machine by touch "ENT" button about 5 seconds till a short "beep" noise comes out. The factory default: local time Sunday, 12:00; diffusion 07:00~21:00.
- After installation, please keep the machine vertical. Tilt or lie flatly may cause oil overflow. The machine efficiency may be affected if the circuit board is contaminated.



سمائل سمايل
SMELL SMILE

TROUBLESHOOTING

Before asking to have the machine repaired, please try to diagnose the problem first following to bellow instructions.

Symptom	Remedy
Does not diffuse	<ul style="list-style-type: none">-Check the power is on or off ;-If the machine is in "not working period", it stops diffuse;-The pump is damaged, change a new one.
Spray little	<ul style="list-style-type: none">-Atomized nozzle may be blocked, diffuse with alcohol to do cleaning ;-Pump is aging, change a new one.
Spray liquid	<ul style="list-style-type: none">-Atomized nozzle is damaged, change a new one;-Machine is tilted or lay flat, please make it stand onend.
Oil spill	<ul style="list-style-type: none">-Bottle is loose, screw it to the right place.
Abnormal sound	<ul style="list-style-type: none">-Pump is loose, install it correctly.
No display on screen	<ul style="list-style-type: none">-The power is off;- Plug is damaged, change a new plug ;-Display screen is damaged, change a new one.